

# GeoMetis® PXCheck

UKOOA P1/xx and P2/xx data format checking system

## Key Features:

Carries out format compliance checks on UKOOA P2/91, P2/94 and P1/90 data files

Full overview of data formats

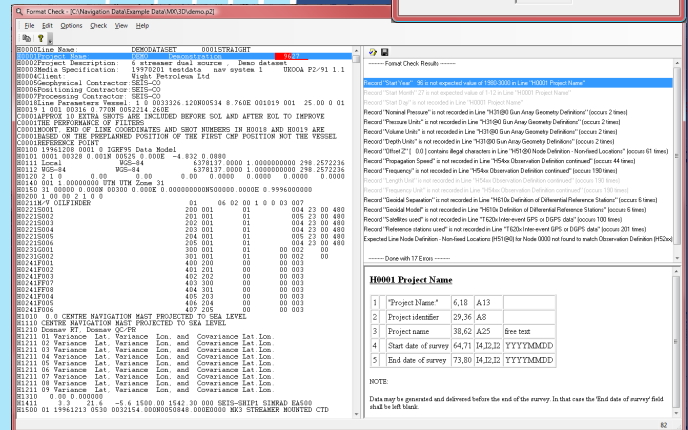
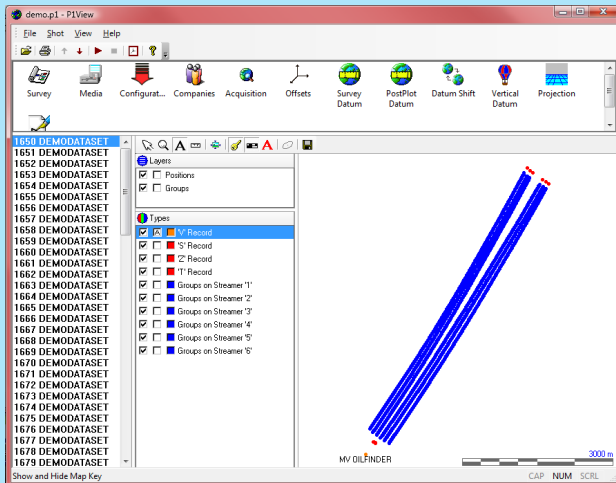
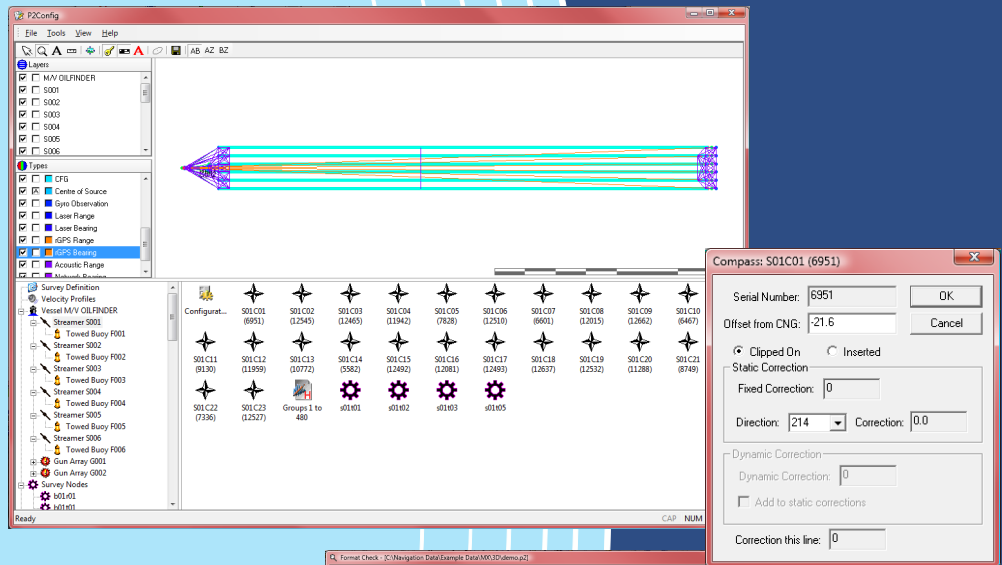
Spatial mapping of P190 files

Automatic relating of data to format

Graphical and text displays

PC based for field or office use

P1/xx and P2/xx are the standard data formats used on marine towed streamer, ocean bottom and transition zone seismic surveys. GeoMetis PXCheck allows the user to check the data and data format of these files for format compliance and errors as well as to visualize the data for evaluation. The interactive map view of the data provides the user with additional tools for analysis.



An invaluable tool for anyone working with UKOOA P1 and P2 files. It can be used in conjunction with additional modules available from Quest Geo Solutions Limited to convert historic and proprietary navigation data formats into UKOOA files prior to analysis in PXCheck.

Additional modules are also available to perform a wide variety of datum and projection conversions on existing UKOOA files, and create new files with the updated geodetic details.

GeoMetis® Reg U.K. Pat & TM Off .



## Applications

- ◆ Quality control by crew and by QC consultants
- ◆ In the office for data evaluation from (planning to sales)
- ◆ In the processing centre for fast cost effective problem solving
- ◆ In the class room for training personnel to understand the data and the formats
- ◆ In the tape library as part of the data storage function

## Features

- ◆ Easily check UKOOA files as both raw data and graphically
- ◆ Manage and interact with files from a whole project.
- ◆ Check files for format compliance
- ◆ View header attributes
- ◆ Format listing, parsing of data and data selection by node and identifier
- ◆ List format errors and allows user to mitigate and report upon results
- ◆ Locates errors within format and compares point by point with data format description
- ◆ Provides interactive graphical overview of data content for data checking

## Software Requirements

**Operating System**     Microsoft Windows 2000 / XP / Vista

P1 & P2 formats courtesy of United Kingdom Offshore Operators Association (UKOOA). All rights acknowledged

---