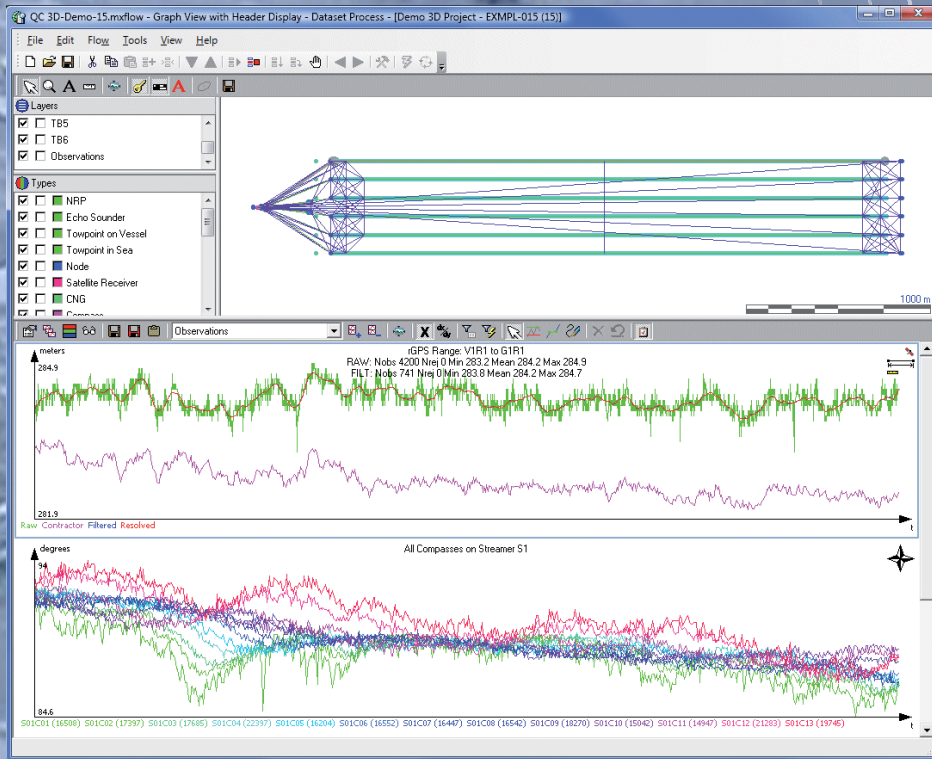


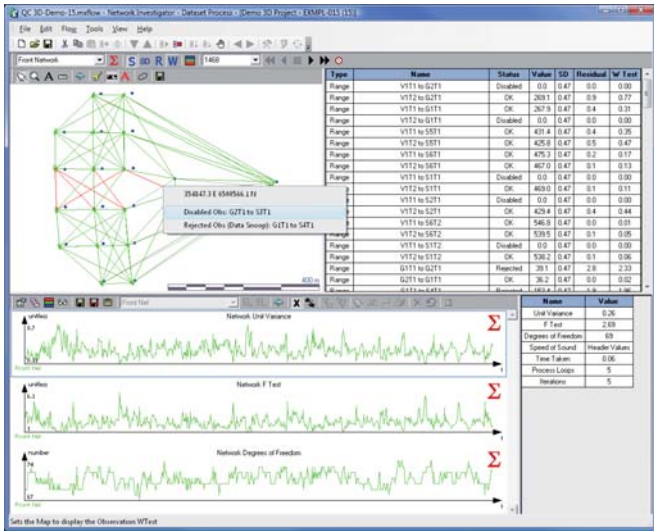
# GEOMETIS™ MX

DATA PROCESSING, QC & ANALYSIS FOR TOWED STREAMER



# GEO METIS™ MX

## DATA PROCESSING, QC & ANALYSIS FOR TOWED STREAMER



### ADVANCED PROCESSING

- Uses advanced algorithms for conventional and full acoustic networks

### POSITION COMPARISON

- Compare any raw, processed & imported positions for 2D, 3D or 4D surveys.

### FILE FORMAT CHECK

- Automatic format check for industry standard UKOOA P2 and P1 files

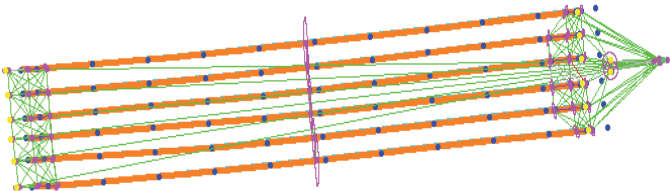
GeoMetis MX is a quality control and data processing suite for marine towed streamer seismic surveys. Using a unique flow based control system the user can define and step through a host of data analysis and reprocessing modules depending on the client requirements. GeoMetis MX provides a series of tools to assess the data quality prior to reprocessing so the actual recorded data is analysed.

Data can be monitored from multiple sequences quickly and easily for comparison across an entire survey.

## ► RELIABILITY & EXPERIENCE

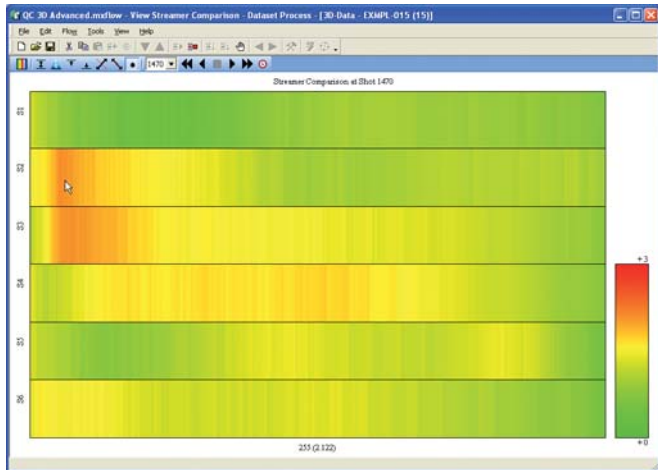
Has been extensively used across all geophysical contractors' systems, by multiple consultancy companies and by or on behalf of many oil companies.

The software is supported by an experienced team of navigation data analysts.



### SPECIFICATIONS

- Runs on laptops
- Windows XP, Vista, & 7 (32 & 64 bit)
- Software downloaded from website
- Licensing for any specified number of days



**Sercel - France**  
 16 rue de Bel-Air  
 B.P. 30439. 44474 CARQUEFOU Cedex  
 Telephone: (33) 2 40 30 11 81  
 Fax: (33) 2 40 30 19 48  
 E-mail: sales.nantes@sercel.com  
[www.sercel.com](http://www.sercel.com)

**Sercel Inc. - USA**  
 17200 Park Row  
 Houston, Texas 77084  
 Telephone: (1) 281 492 6688  
 Fax: (1) 281 579 7505  
 E-mail: sales.houston@sercel.com

**Quest Geo Solutions Ltd**  
**A Sercel Company**  
 Passfield Business Centre  
 Lynchborough Road, Passfield  
 Liphook, Hampshire GU30 7SB  
 Telephone: (44) (0)1428 751565  
 E-mail: questsales@sercel.com  
[www.qgsl.com](http://www.qgsl.com)